

Wild animals you can see in the Kotoku Area



Japanese macaque



Long-tailed tit



Narcissus flycatcher



Coal tit



Red-flanked bluetail



Chestnut tiger butterfly



Please do not feed the wild animals.
Capturing wild animals is prohibited.

The Retreat Course to enjoy nature and hot springs

Tobu-nikko Sta.

Bus (70 min)

① Kotokunuma Stop

3 min walk

② Kotoku-numa Swamp

15 min walk along the walking path

③ Kotoku Farm cattle range

15 min walk along the walking path

④ KOTOKU CORRAL

2 min walk

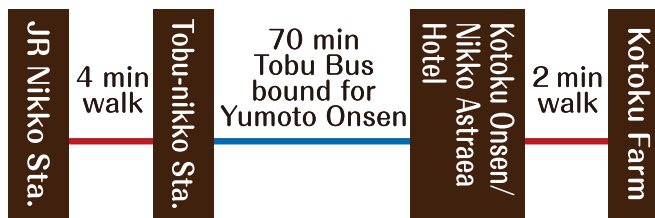
⑤ Kotoku no Oka

4 min walk

⑥ Stay at Nikko Astraea Hotel or
visit the drop-in onsen facility



Access Information



Planning to visit Nikko
by the Tobu Line?
Get a great deal with
the Nikko Pass



Tobu Bus Information

東武バス日光



Rules in the mountains

In order for many people to be able to
enjoy being in the mountains, please
respect and protect nature in the National
Park and observe the following rules:

For more
information



No littering



No picking
plants and
flowers



No feeding
animals



No smoking



No bonfires



Stay on
designated
walking paths



No pets on
climbing trails
and natural paths



Be aware
of bears

The latest sightseeing information
on the Nikko area is also available
on Instagram and Facebook.

Instagram



Facebook



Published in December 2024

Nikko Kotoku Area Map

Heal yourself in onsen,
have an adventure in nature,
and enjoy a serene yet extraordinary
time apart from the cares of daily life.

Kotoku Farm

2452 Chugushi, Nikko City,
Tochigi Prefecture
TEL: 0288-55-0256

Nikko Kotoku Area Map

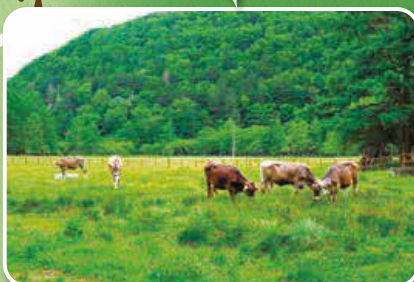
2 Kotoku-numa Swamp

Created by the inflow of spring water, this small yet beautiful swamp, a protected wetland, is only about 300 meters around.

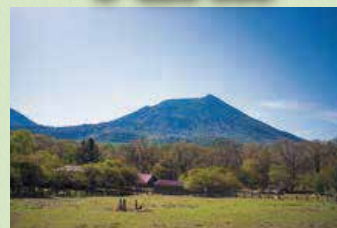


Kotoku-numa Swamp

You can see the cattle grazing only during the limited period from July to late October.



Kotoku Farm



Established in 1897, Kotoku Farm is located in Nikko National Park in Okunikko, with a size of about 50,000 square meters. Reopened in July 2024 after a major renovation, the farm resumed cattle grazing after about five years. Surrounded by broadleaf trees, such as *mizunara* oak trees, the farm offers beautiful views of fresh green leaves in early summer and colorful leaves in autumn.

Kotoku Farm

5 Kotoku no Oka

The ice cream at the farm is especially tasty!



4 KOTOKU CORRAL

3 Kotoku Farm cattle grazing area

Kotoku Garden



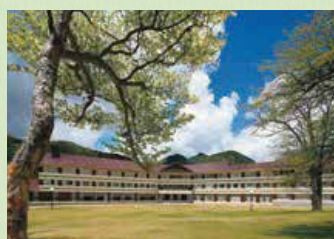
The walking paths are well-maintained, allowing for a leisurely stroll.

Drop-in hot spring bathing hours: 12:30–15:30 (admission until 15:00)
Fees: Adult (junior high school student and older) 1,000 yen, Child (6 years and older) 500 yen



6 Nikko Astraea Hotel

The only resort hotel in the Kotoku Onsen area, located within Nikko National Park. The onsen is supplied with undiluted hot spring water drawn directly from Nikko Yumoto. The onsen facility is available even if you are not a hotel guest.



Nikko Astraea Hotel website

Kotoku Onsen / Nikko Astraea Hotel stop

Nikko Astraea Hotel

Address: 2501-4 Chugushi, Nikko City, Tochigi Prefecture
TEL: 0288-55-0585

About Kotoku Farm

4 KOTOKU CORRAL

Enjoy hearty dishes, including large hamburgers and hotdogs! Alcoholic beverages are also available.



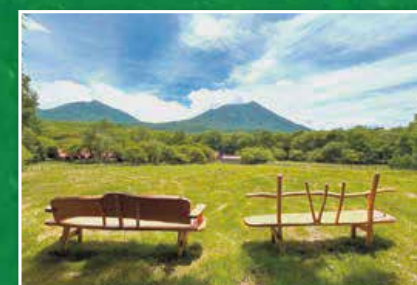
Juicy hamburgers are the signature dish of this store!

Information

Open Hours: April 1–November 30
- Ice Cream Stand: 9:00–16:30
- Shop: 9:00–16:00
- Lunch: 11:00–15:30 (L.O. 15:00)

5 Kotoku no Oka (miharashi viewpoint bench)

This “hidden gem” offers beautiful views of the back side of Mt. Nantai (ura-nantai). It is also a good photo spot where you can take magnificent photos, surrounded by nature.



Benches made from fallen trees from Nikko National Park are installed.

Seasonal flowers

Along the walking paths to Kotoku no Oka, you can see beautiful Japanese primrose flowering from late May to mid-June.



Kurinso (Japanese primrose): A popular wildflower with large, beautiful blooms.

0 100m



Kawamata Onsen→

←Senjogahara / Lake Chuzenji
1 Kotokunuma Stop